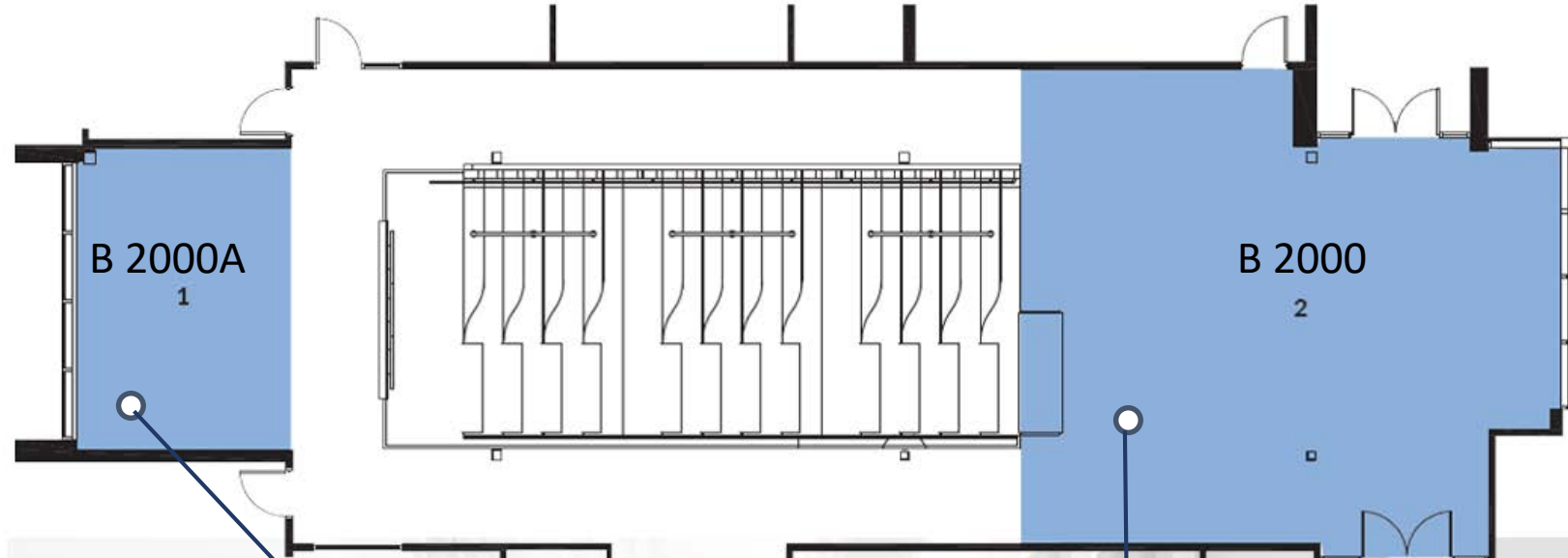


EIX Johnson Insurance Atrium – Upper Level



KEY PLAN



Lounge casual convening

Area: 280 sqft
Height: 18'-4"

Capacities:

Reception	15
Theatre	30

BASE RATE
\$200/day
\$100/half day
\$30/hourly

Upper Atrium open concept/registration

Area: 990 sqft
Height: 18'-4"

Capacities:

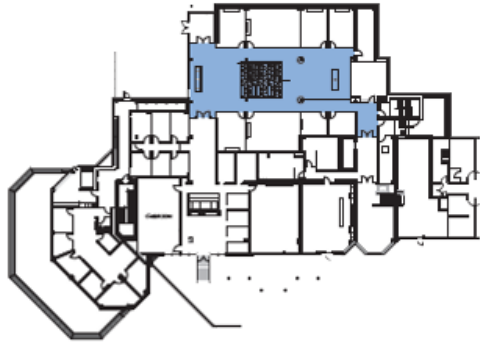
Reception	50
-----------	----

BASE RATE
\$800/day
\$400/half day
\$120/hourly

Updated: January, 2021

Prices in Canadian Dollars, plus 15% tax

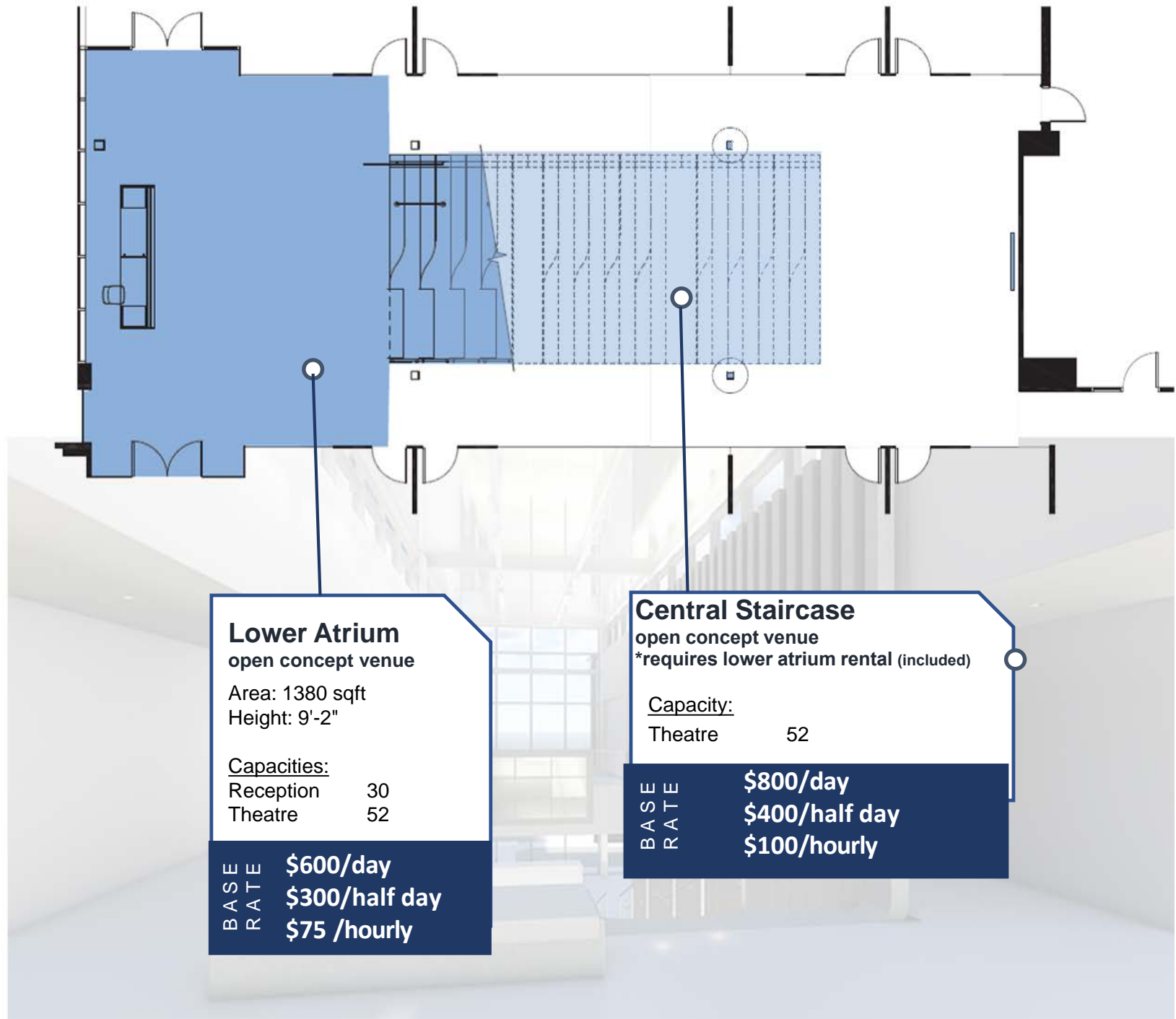
EIX Johnson Insurance Atrium – Lower Level



KEY PLAN

Updated: January, 2021

Prices in Canadian Dollars, plus 15% tax



Lower Atrium
open concept venue

Area: 1380 sqft
Height: 9'-2"

Capacities:
Reception 30
Theatre 52

BASE RATE	\$600/day
	\$300/half day
	\$75 /hourly

Central Staircase
open concept venue
*requires lower atrium rental (included)

Capacity:
Theatre 52

BASE RATE	\$800/day
	\$400/half day
	\$100/hourly